

The Power over Ethernet (POE) can deliver data and electrical power to Wireless Device (AP/Bridge). It is easy to install, Plug n Play and requires no tools or software. With this POE you can mount devices such as an AP anywhere in a building without worrying about the location of a power supply.

■ Product ID

- Brick type mechanical design with power indicator (Red LED).
- Dimension: (L) 82 x (W) 46 x (H) 21mm

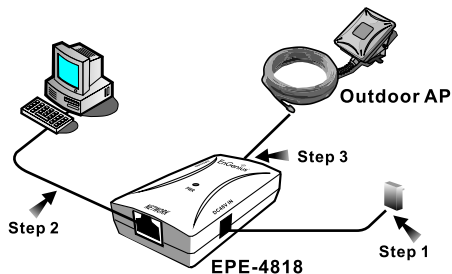
■ Operation Environment

- Operation temperature: 0°C~ 60°C
- Storage temperature: -20°C~ 70°C
- Humidity: 5% ~ 95% typical

■ Package Content

- One 48VDC, 375mA Inline Power Injector (PoE)
- One AC/DC adapter 100~240VAC, 50~60Hz with wall-mount plug and DC plug power cord
- One User Quick Guide

Application Diagram



■ Installing steps:

- Step 1: Plug the DC plug of the AC/DC power adapter into the **DC Input Port** of Inline Power Injector and the wall-mount plug into a power outlet or power strip. The Power LED on the Inline power Injector will light up
- Step 2: Run the cross-over type uplink Ethernet cable from **Data Input Port** to the Ethernet port on a PC
- Step 3: Attach one straight Ethernet cable from Wireless Device to the **Power & Data Output Port** on the Inline Power Injector